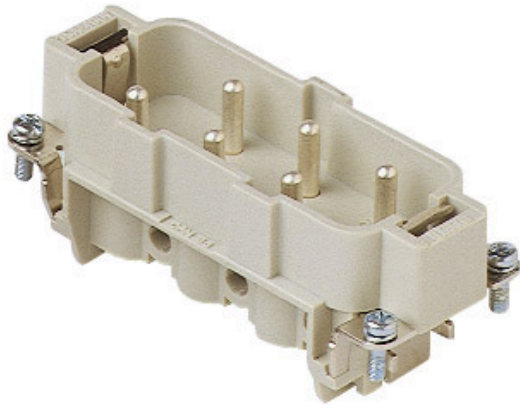



Part number

# CPM 06 X



## Brief description:

male insert, 6 poles, screw terminal connections, 35A, 690V, silver plated, size "77.27", CLASS inserts

Product description	
Model	male insert
Version	screw terminal connections
Series	CP
Product type	with male contacts
Variant	without plate
Family	CLASS inserts
Size	size "77.27"
N. of poles	6 poles + 
Technical data	
Current	35 A (A.C. and D.C.)
Voltage	400 - 690 V
Rated impulse withstand voltage	6kV
Pollution degree	3
Wire cross-section	1,50 mm <sup>2</sup> - 6,00 mm <sup>2</sup>
AWG size	16 - 10
Operating temperature range (min, max)	-40°C ... +125°C
Contact type	silver plated
Mating cycles	≥ 500
IP degree of protection	IP20 without enclosure; IP65/IP66/IP67/IP68 with enclosure
Further technical details	
Insulation resistance	≥ 10 GΩ
Weight	94,50 g

Approvals / Standards	
Reference standard	EN 61984 (2001-11)
General ordering information	
EAN13 code	8015747213424
Tariff number	85369095
Packaging Information	
Packaging length	210,00 mm
Packaging height	200,00 mm
Packaging width	130,00 mm
Packaging weight	1,89 kg
Packaging volume	5,46 dm <sup>3</sup>
Packaging description	Carton box
Packaging quantity	20 Pcs
Packaging EAN code	8015747213455
Sub-packaging length	197,00 mm
Sub-packaging height	35,00 mm
Sub-packaging width	113,00 mm
Sub-packaging weight	0,47 kg
Sub-packaging volume	0,78 dm <sup>3</sup>
Sub-packaging description	Carton
Sub-packaging quantity	5 Pcs
Sub-packaging EAN barcode	8015747213462